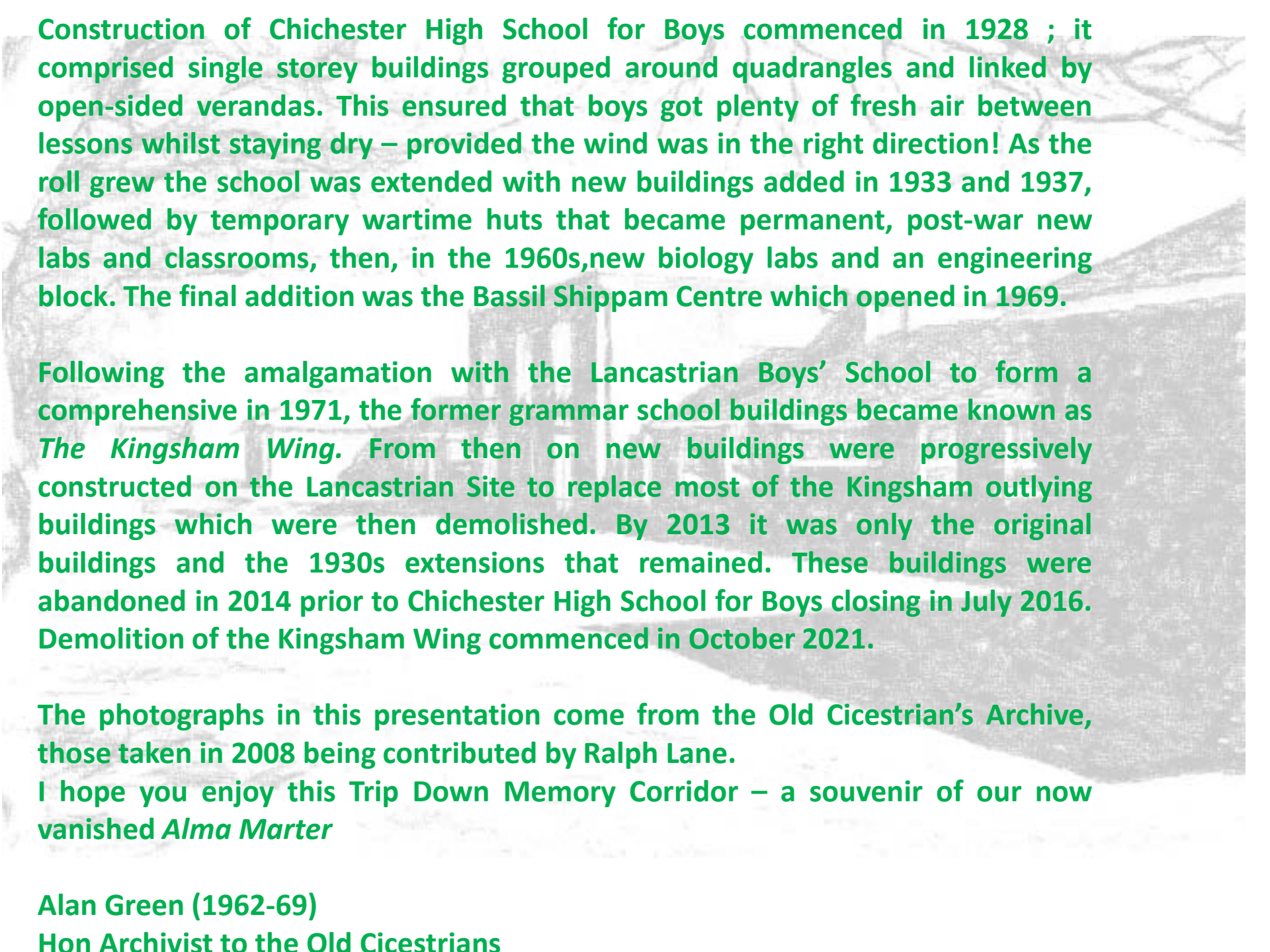




# **A VIRTUAL TOUR OF THE KINGSHAM BUILDINGS OF CHICHESTER HIGH SCHOOL FOR BOYS**

**Compiled by Alan Green,  
Archivist to the Old Cicestrians**

**An annotated version of a talk presented to the Old  
Cicestrians' Christmas Lunch 2021**



Construction of Chichester High School for Boys commenced in 1928 ; it comprised single storey buildings grouped around quadrangles and linked by open-sided verandas. This ensured that boys got plenty of fresh air between lessons whilst staying dry – provided the wind was in the right direction! As the roll grew the school was extended with new buildings added in 1933 and 1937, followed by temporary wartime huts that became permanent, post-war new labs and classrooms, then, in the 1960s, new biology labs and an engineering block. The final addition was the Bassil Shippam Centre which opened in 1969.

Following the amalgamation with the Lancastrian Boys' School to form a comprehensive in 1971, the former grammar school buildings became known as *The Kingsham Wing*. From then on new buildings were progressively constructed on the Lancastrian Site to replace most of the Kingsham outlying buildings which were then demolished. By 2013 it was only the original buildings and the 1930s extensions that remained. These buildings were abandoned in 2014 prior to Chichester High School for Boys closing in July 2016. Demolition of the Kingsham Wing commenced in October 2021.

The photographs in this presentation come from the Old Cicestrian's Archive, those taken in 2008 being contributed by Ralph Lane.

I hope you enjoy this Trip Down Memory Corridor – a souvenir of our now vanished *Alma Marter*

Alan Green (1962-69)

Hon Archivist to the Old Cicestrians

# The Way We Were, but...



Form 1X Sept 1962



...who'd have thought it  
would come to this...?

DANGER  
DEMOLITION  
IN PROGRESS

Cue for...



# ...a Trip Down Memory Corridor





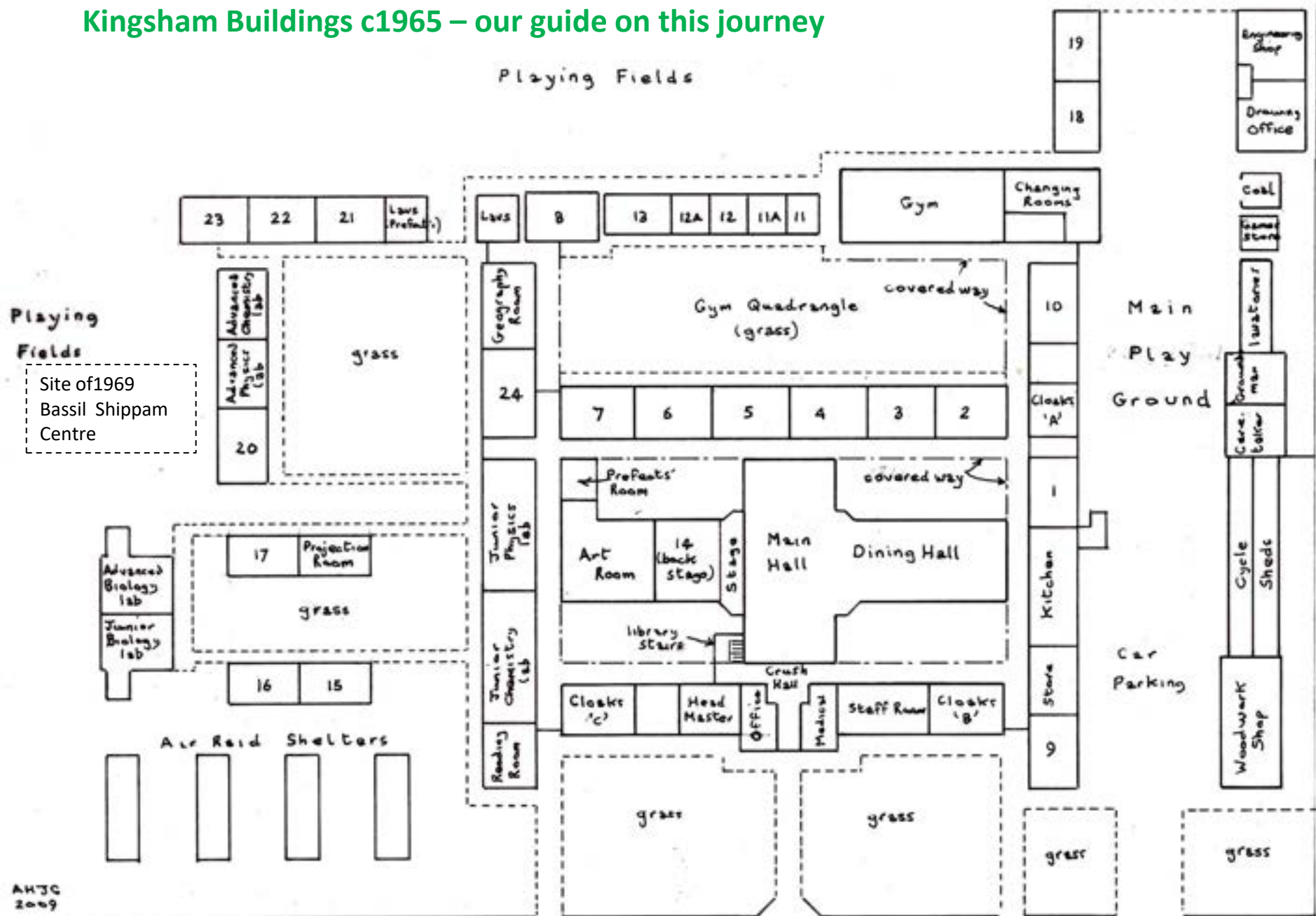
A reminder of the official opening of CHSB which had actually commenced business five months earlier in September 1928. This bronze plaque was fixed to the wall of Room 9, next to the western entrance.



A view of the school in 1928 shewing how everything was single storey. This is the only view I have found of the west range of outbuildings beyond the woodwork shop, namely the double sided cycle sheds and the sheds occupied by the groundsmen and caretakers.



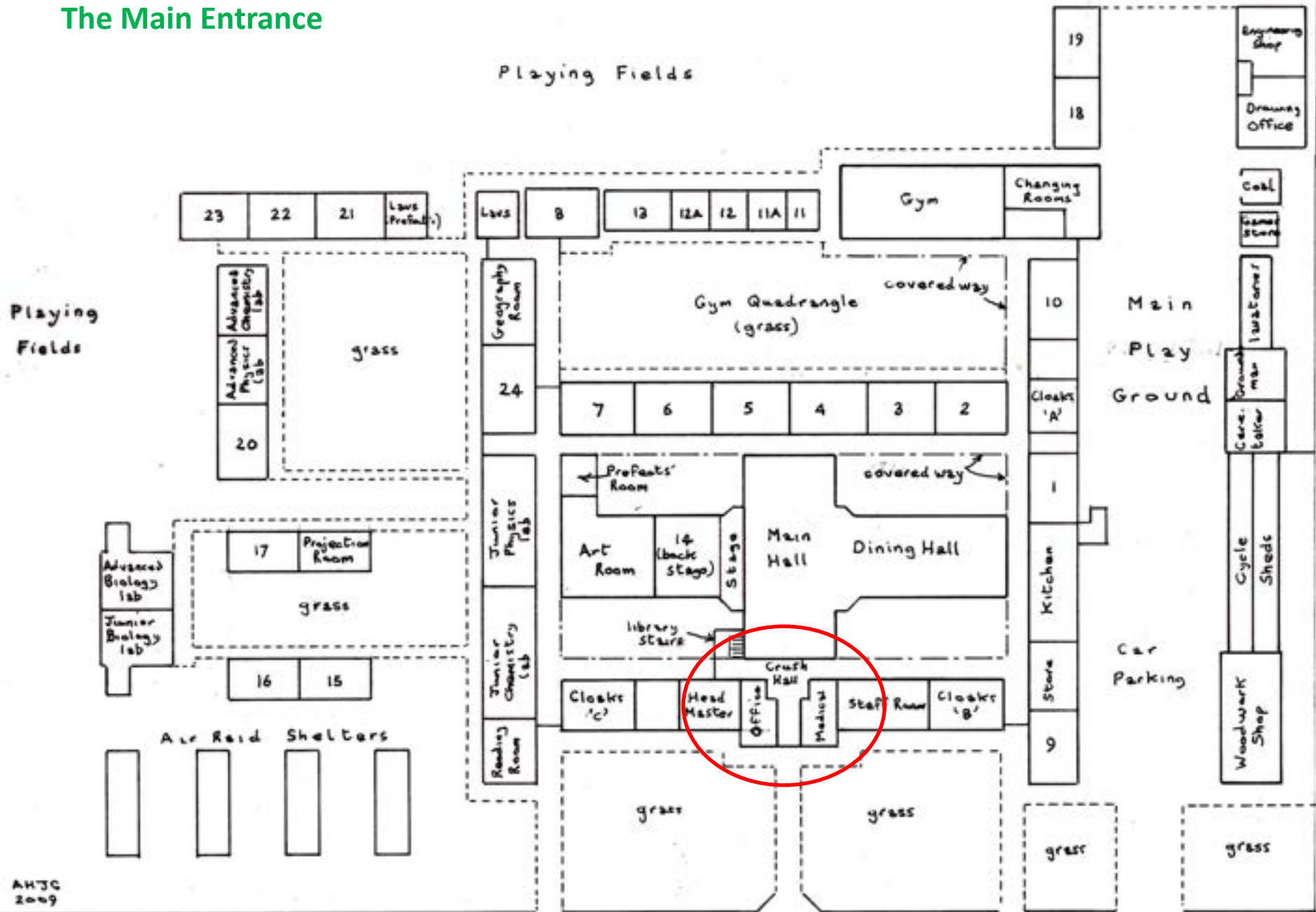
# Kingsham Buildings c1965 – our guide on this journey



Site of 1969 Basil Shippam Centre

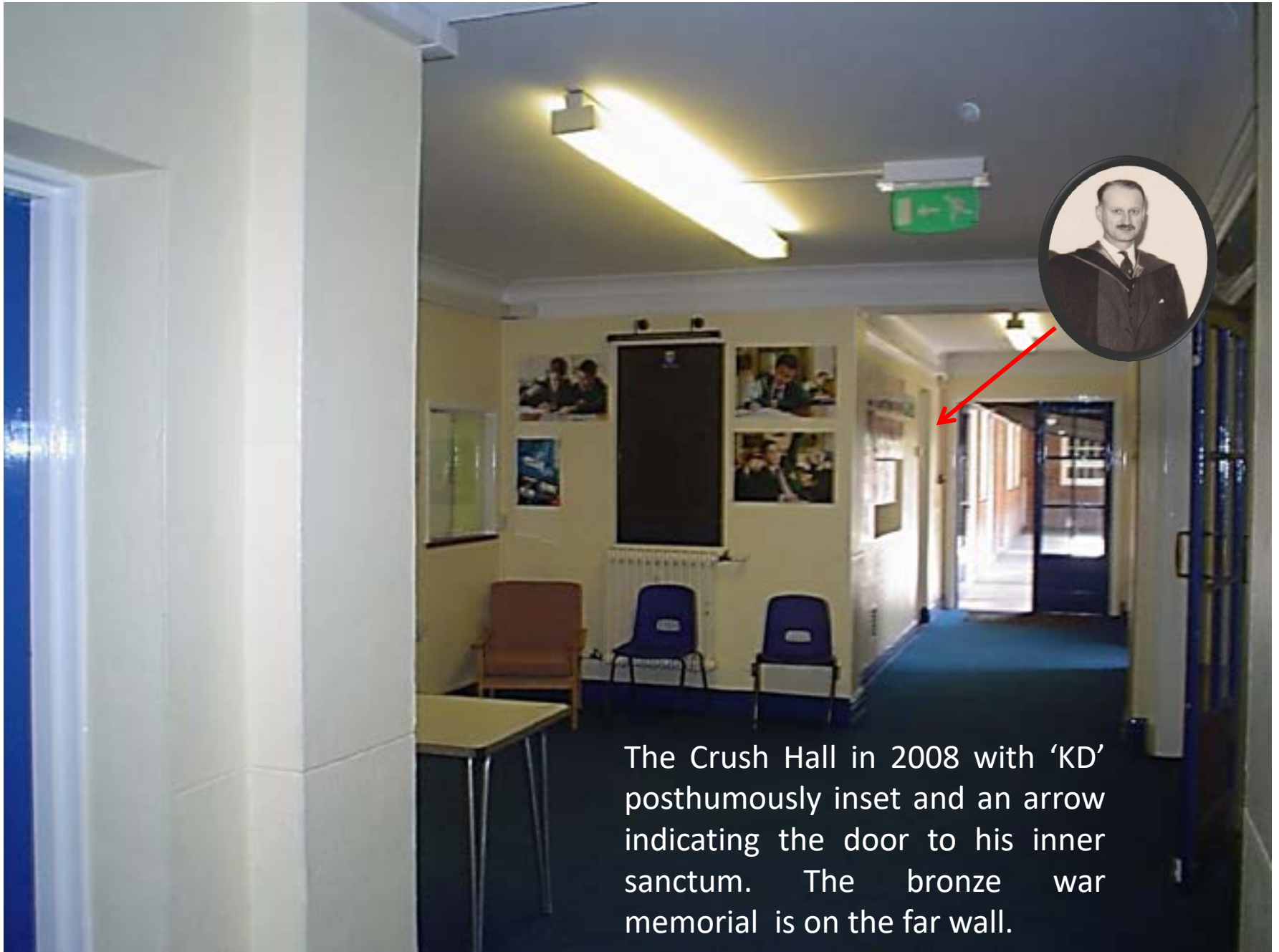


# The Main Entrance





The 1930s extensions brought about the only double-storey part of the school when a library was built over the Crush Hall. The front door and the manicured lawns were strictly forbidden territory for boys !



The Crush Hall in 2008 with 'KD' posthumously inset and an arrow indicating the door to his inner sanctum. The bronze war memorial is on the far wall.





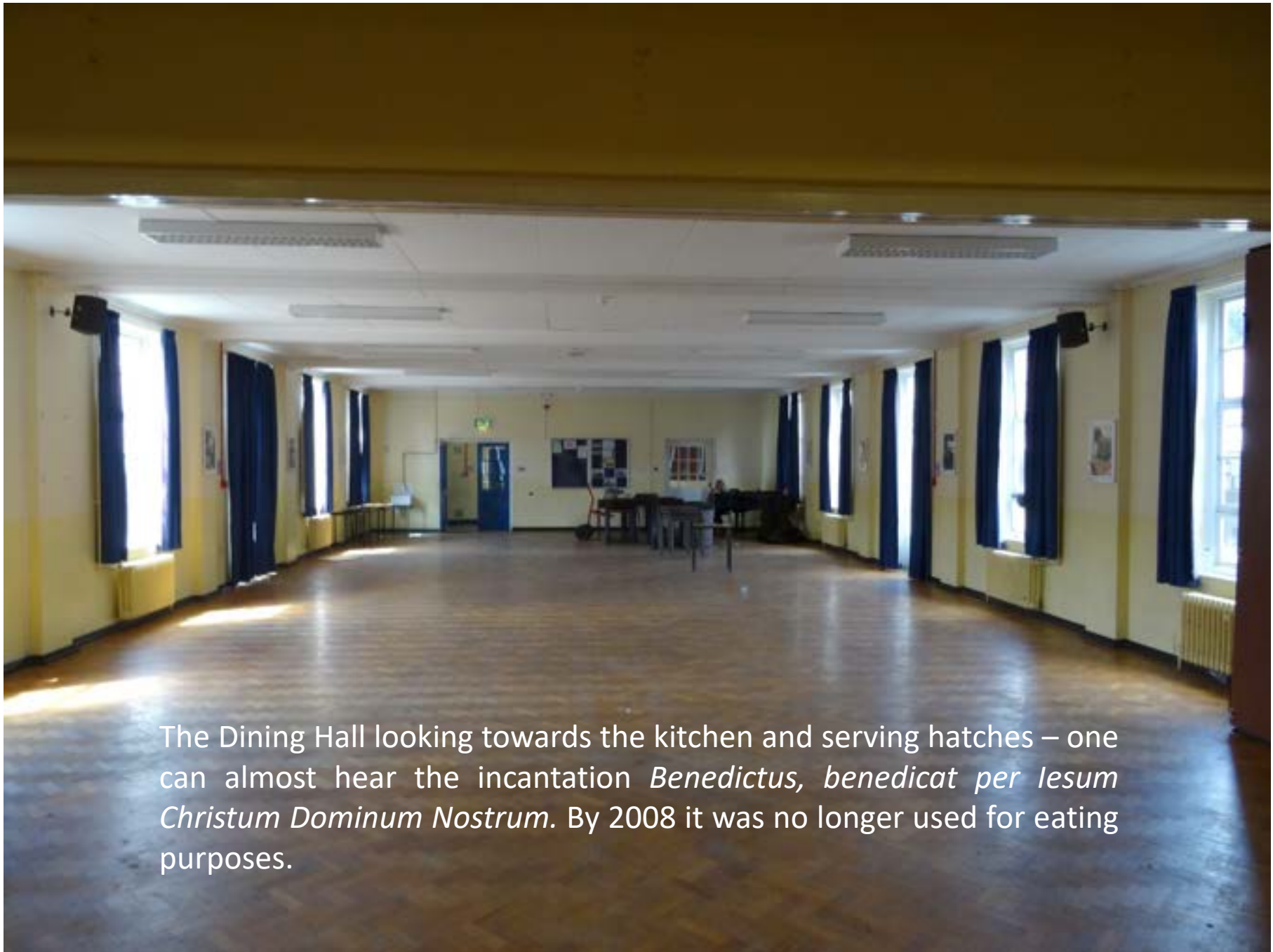
The library stairs in 2014. Sadly I have been unable to find a photograph of the library as it used to be. By the time I visited in 2014 to take some photographs before the buildings were abandoned, it had been replaced by a much better facility on the Lancastrian Site and the space had been partitioned off into offices





The Main Hall seen during the 1988 anniversary reunion with the original crimson stage curtains still in situ. By this time the honours boards, which used to adorn the far wall, had been removed and seemingly were not preserved.



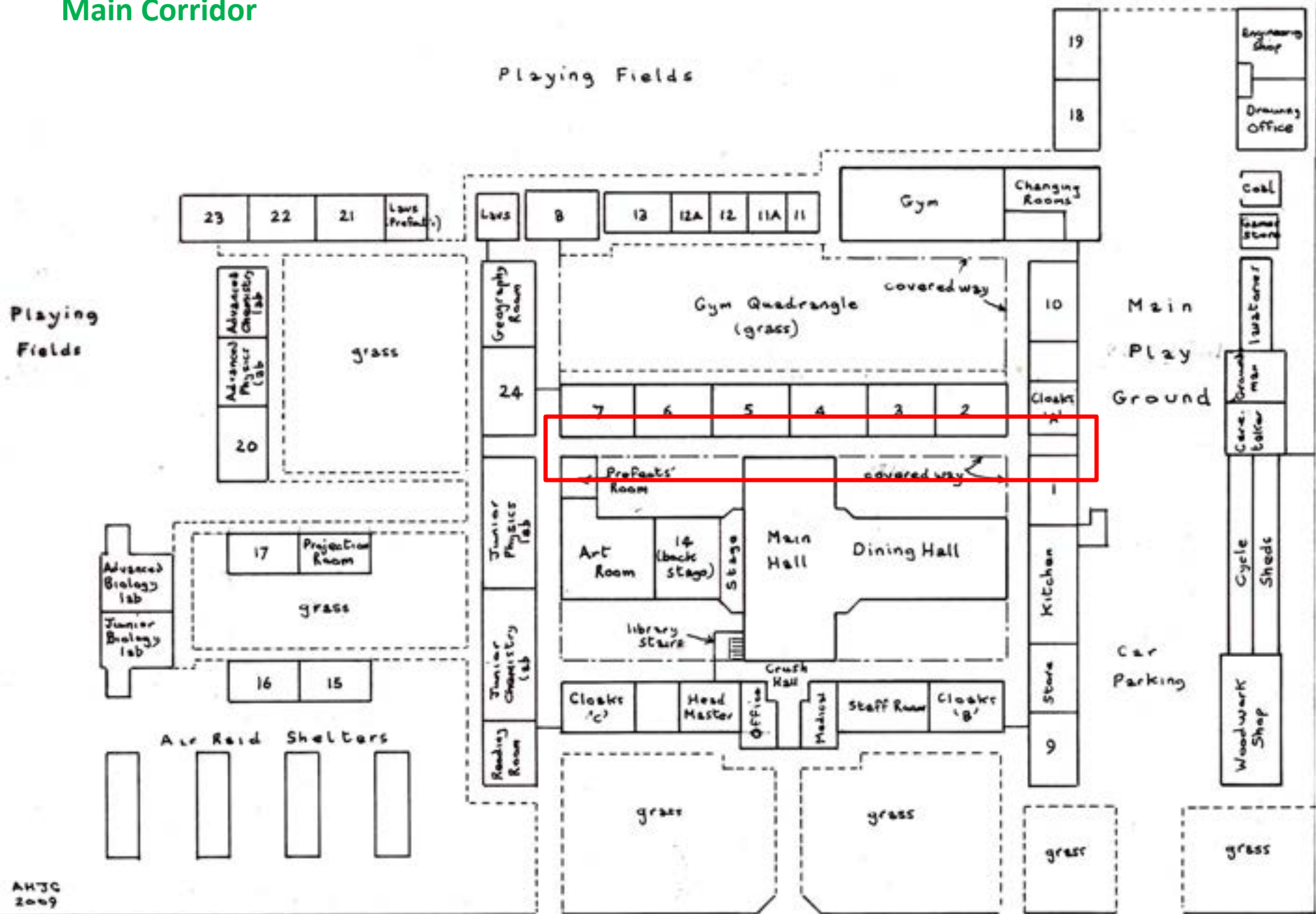


The Dining Hall looking towards the kitchen and serving hatches – one can almost hear the incantation *Benedictus, benedicat per Iesum Christum Dominum Nostrum*. By 2008 it was no longer used for eating purposes.

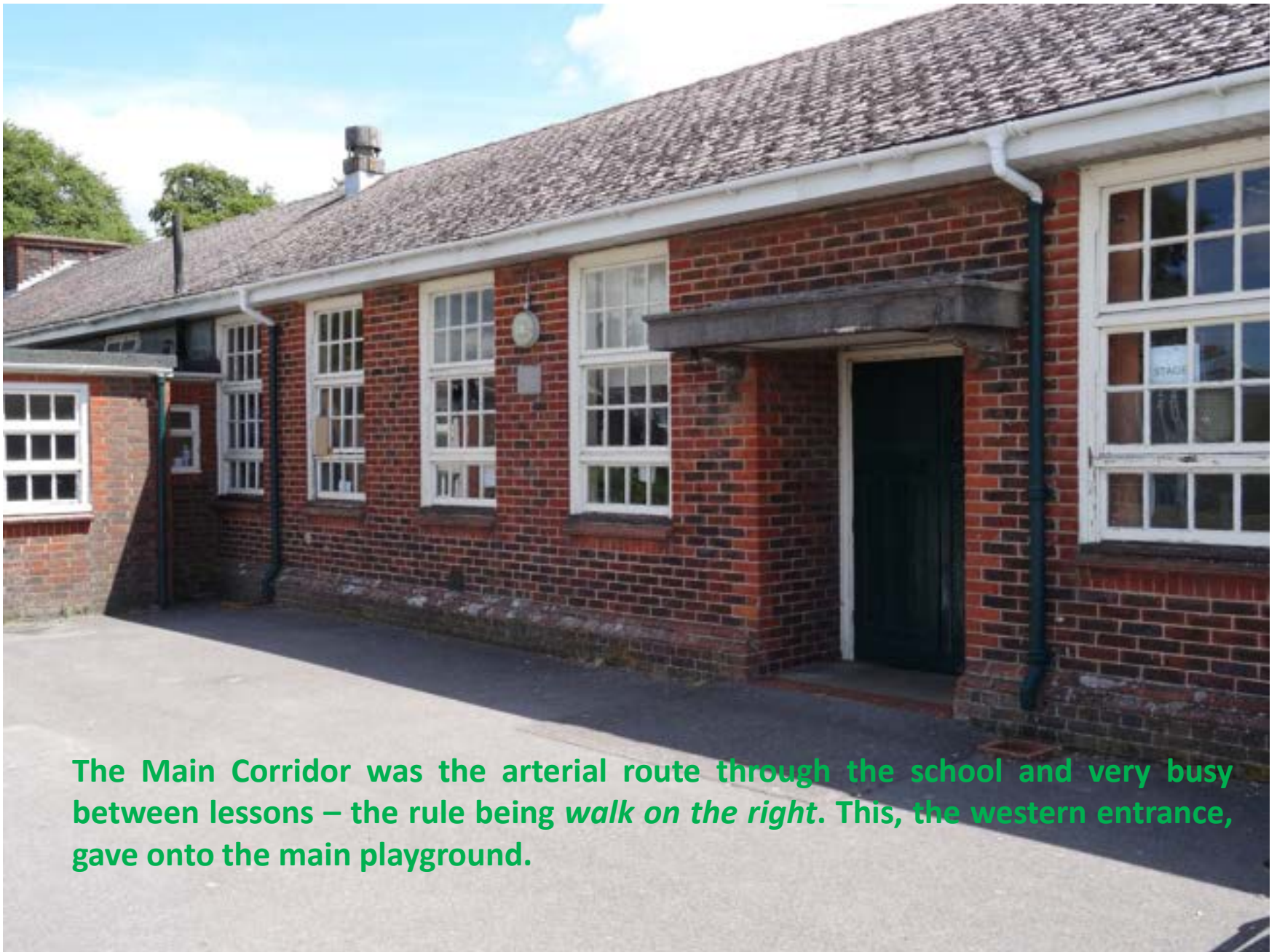


The Art Room was added in 1937. Facing north and with a north-light truss roof it was ideal for its purpose, albeit a tad cold in winter. By 2008 when this photograph was taken it had been converted into a sumptuous staff room.

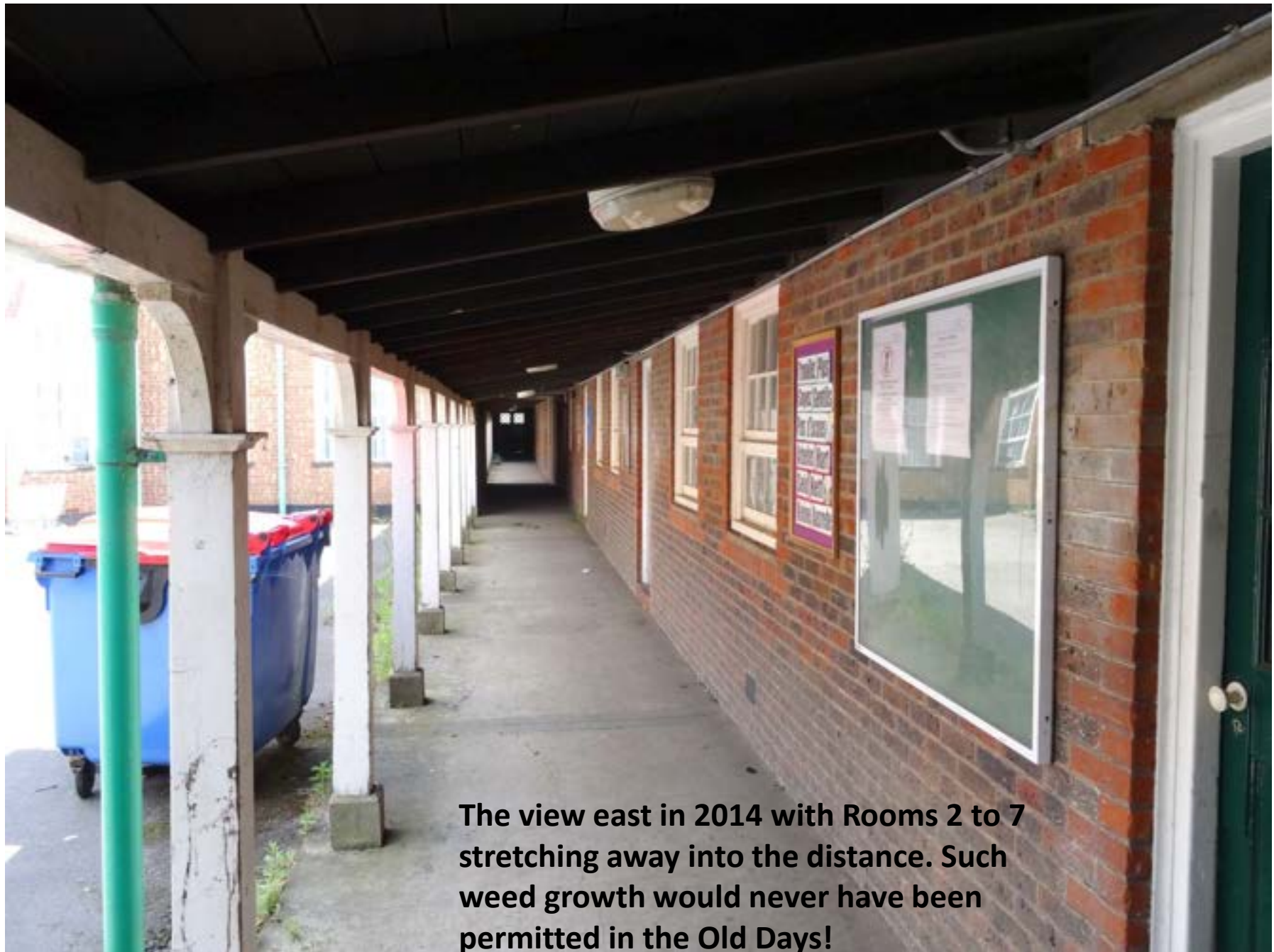
# Main Corridor







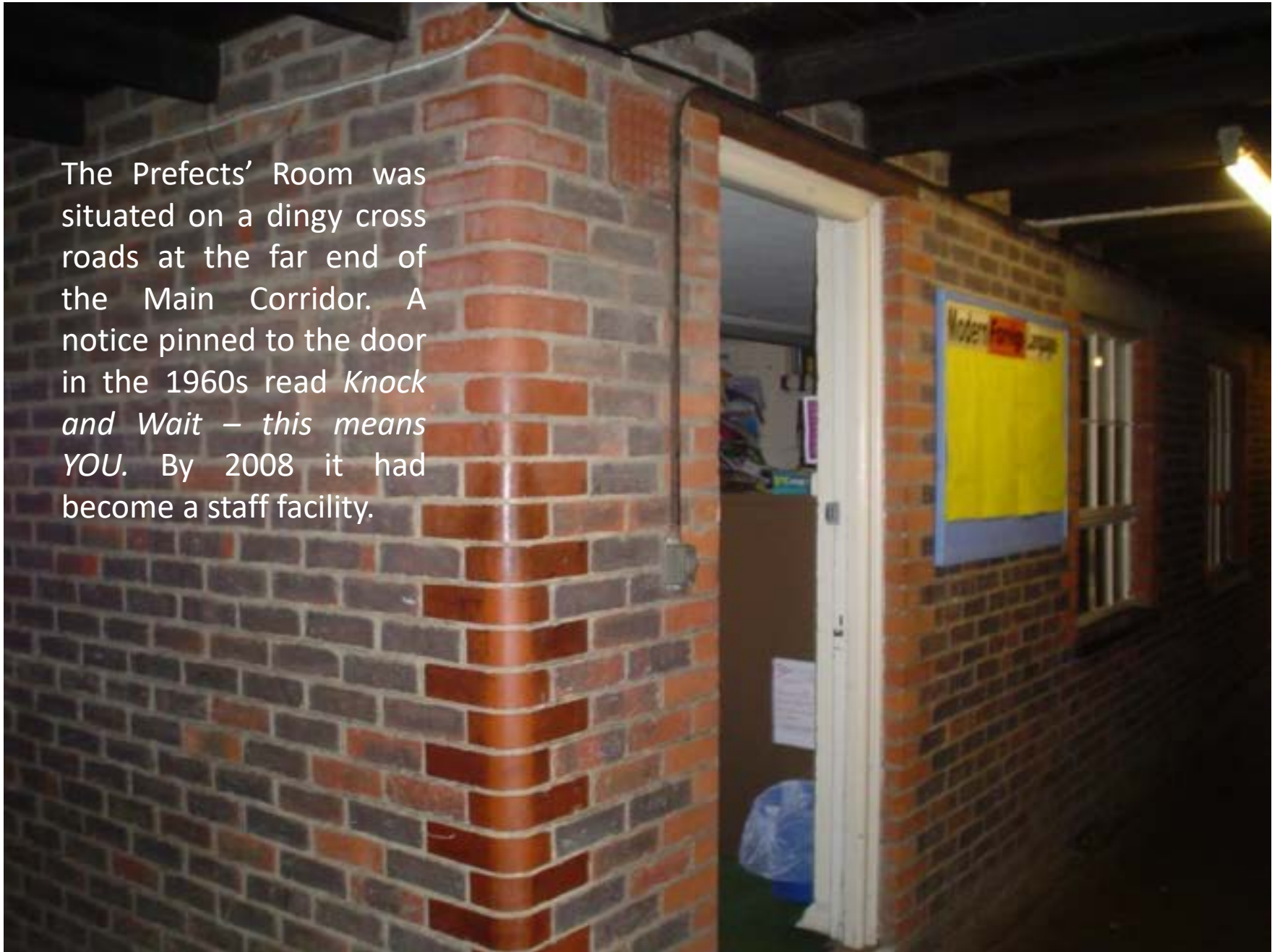
The Main Corridor was the arterial route through the school and very busy between lessons – the rule being *walk on the right*. This, the western entrance, gave onto the main playground.



**The view east in 2014 with Rooms 2 to 7 stretching away into the distance. Such weed growth would never have been permitted in the Old Days!**



The Prefects' Room was situated on a dingy cross roads at the far end of the Main Corridor. A notice pinned to the door in the 1960s read *Knock and Wait – this means YOU*. By 2008 it had become a staff facility.









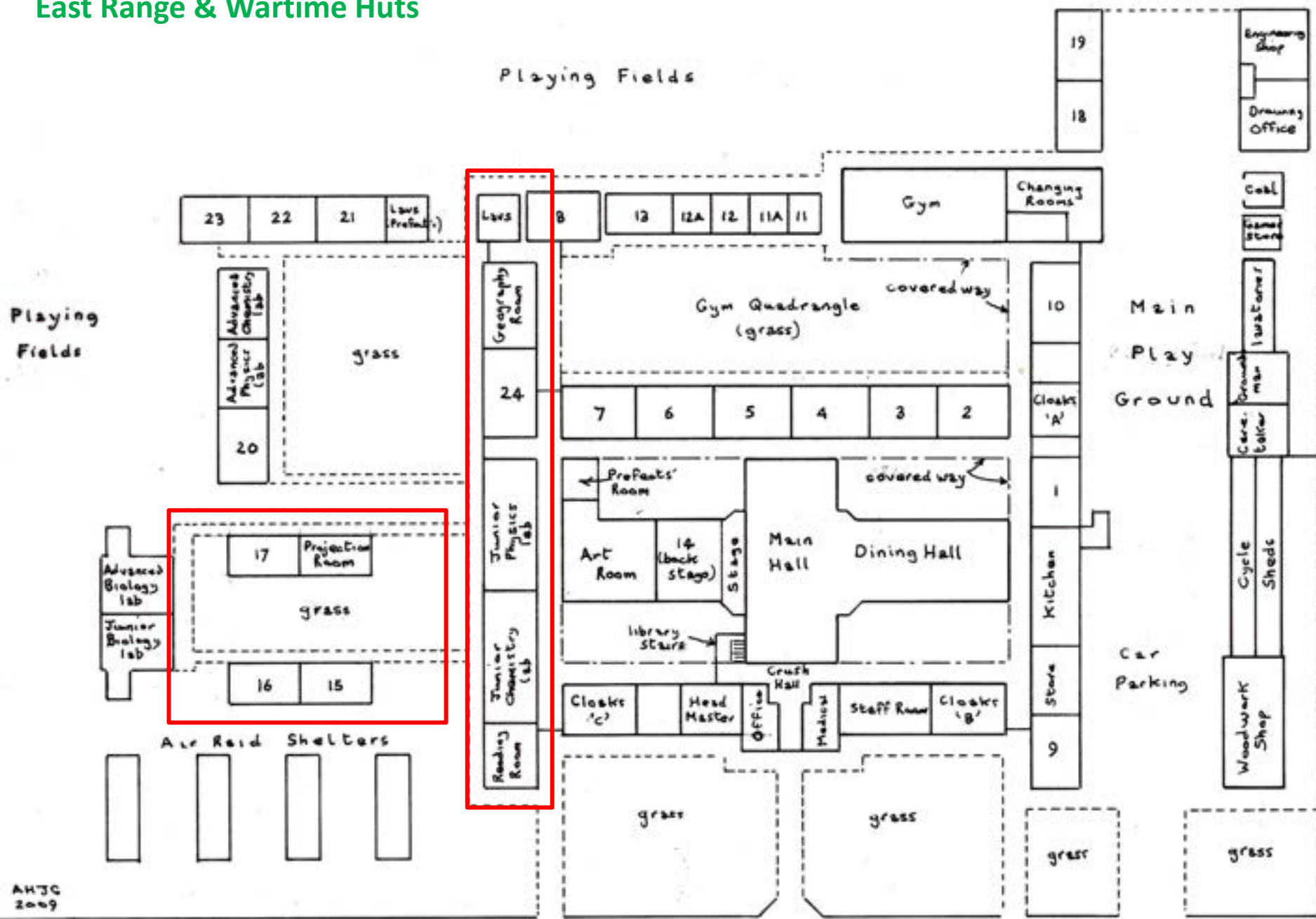
A view into the Gym Quadrangle from the Gym Changing Room. The lost property box was situated just before the end of the veranda. There was a large gap in the veranda going past the wartime huts towards Room 8, it having been decided that extensions of the verandas to link post 1937 buildings were not necessary! It made wet days interesting.

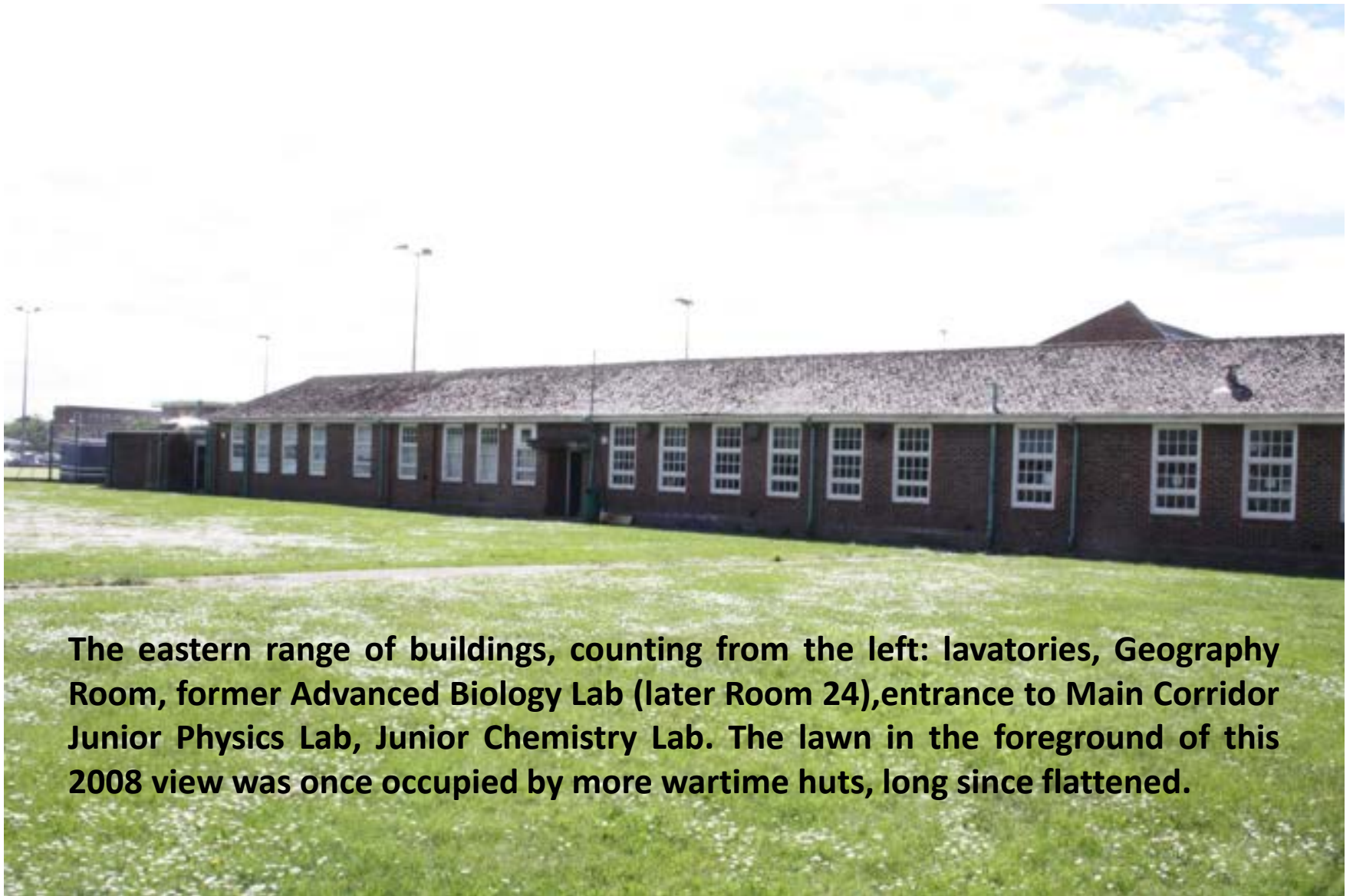


The manicured lawn of the Gym Quad was another place strictly out of bounds; walking on it was a hanging offence. In the background is the famous Geography Room and to its right Room 8. The path on the left, alongside Rooms 2 to 7, was rarely used



# East Range & Wartime Huts





**The eastern range of buildings, counting from the left: lavatories, Geography Room, former Advanced Biology Lab (later Room 24), entrance to Main Corridor Junior Physics Lab, Junior Chemistry Lab. The lawn in the foreground of this 2008 view was once occupied by more wartime huts, long since flattened.**



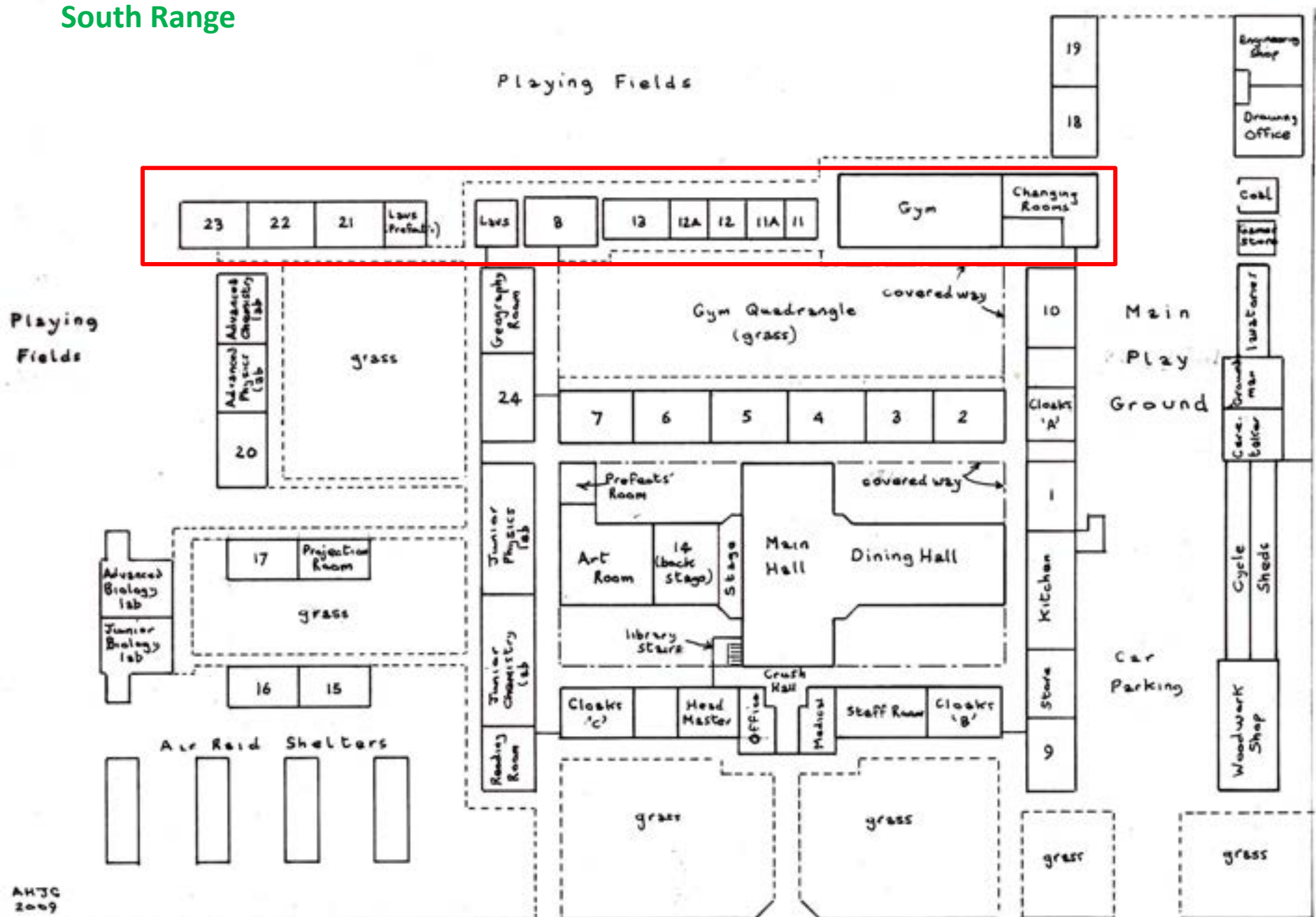
The wartime huts, this one being the original Junior Biology Lab with *Bogue* Murch and a group of boys – probably the Bug Club . The four huts were heated by cast-iron stoves and the chimney of one can be seen on the right. In the 1960s three of the huts were occupied by the first forms and, following construction of new biology labs in 1962, this one became the Projection Room though I don't recall any projection going on. It housed the first ever Tuck Shop and an electric cooker used by *Kate* Anderson to train leavers in the gentle art of self survival.





The interior of the old Junior Biology Lab , a rare example of a classroom view. The bolted pre-cast concrete construction of the huts can be appreciated.

# South Range



Playing Fields

23 22 21 Law Prefab Law 8 13 12A 12 11A 11 Gym Changing Rooms

Playing Fields

Advanced Chemistry Lab  
Advanced Physics Lab  
20  
grass

Geography Room  
24  
Junior Physics Lab  
Junior Chemistry Lab  
Reading Room

Gym Quadrangle (grass)  
covered way  
7 6 5 4 3 2  
Cloaks 'A'

← Prefects' Room  
Art Room 14 (back stage) stage  
Main Hall Dining Hall  
covered way  
library stairs  
Crank Hall

Cloaks 'C' Head Master Office Medical Staff Room Cloaks 'B'

19  
18  
10  
1  
9

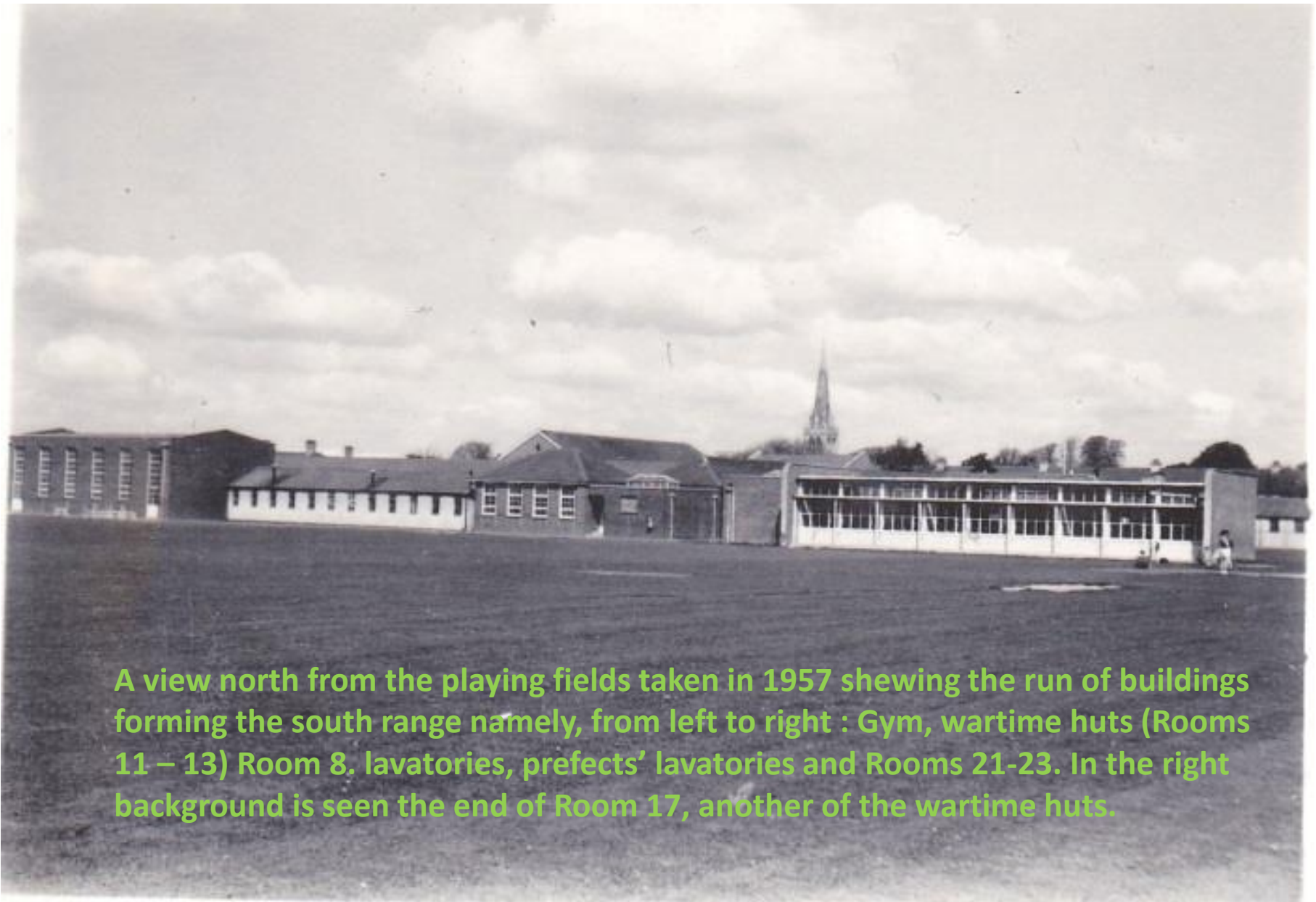
Main Play Ground

Car Parking

Engineering Shop  
Drawing Office  
Coal  
Lumber Store  
Wastewater  
Car-batteries  
Cycle Shed  
Woodwork Shop

Advanced Biology Lab  
Junior Biology Lab  
17 Projection Room  
grass  
16 15  
Air Raid Shelters

grass  
grass  
grass  
grass



A view north from the playing fields taken in 1957 showing the run of buildings forming the south range namely, from left to right : Gym, wartime huts (Rooms 11 – 13) Room 8, lavatories, prefects' lavatories and Rooms 21-23. In the right background is seen the end of Room 17, another of the wartime huts.





**The interior of the Gym in 2008. For those not of a gymnastic disposition this was a place of double dread for in the summer months it also served as an examination room; the smell of stale sweat and coconut matting doing little to aid concentration.**



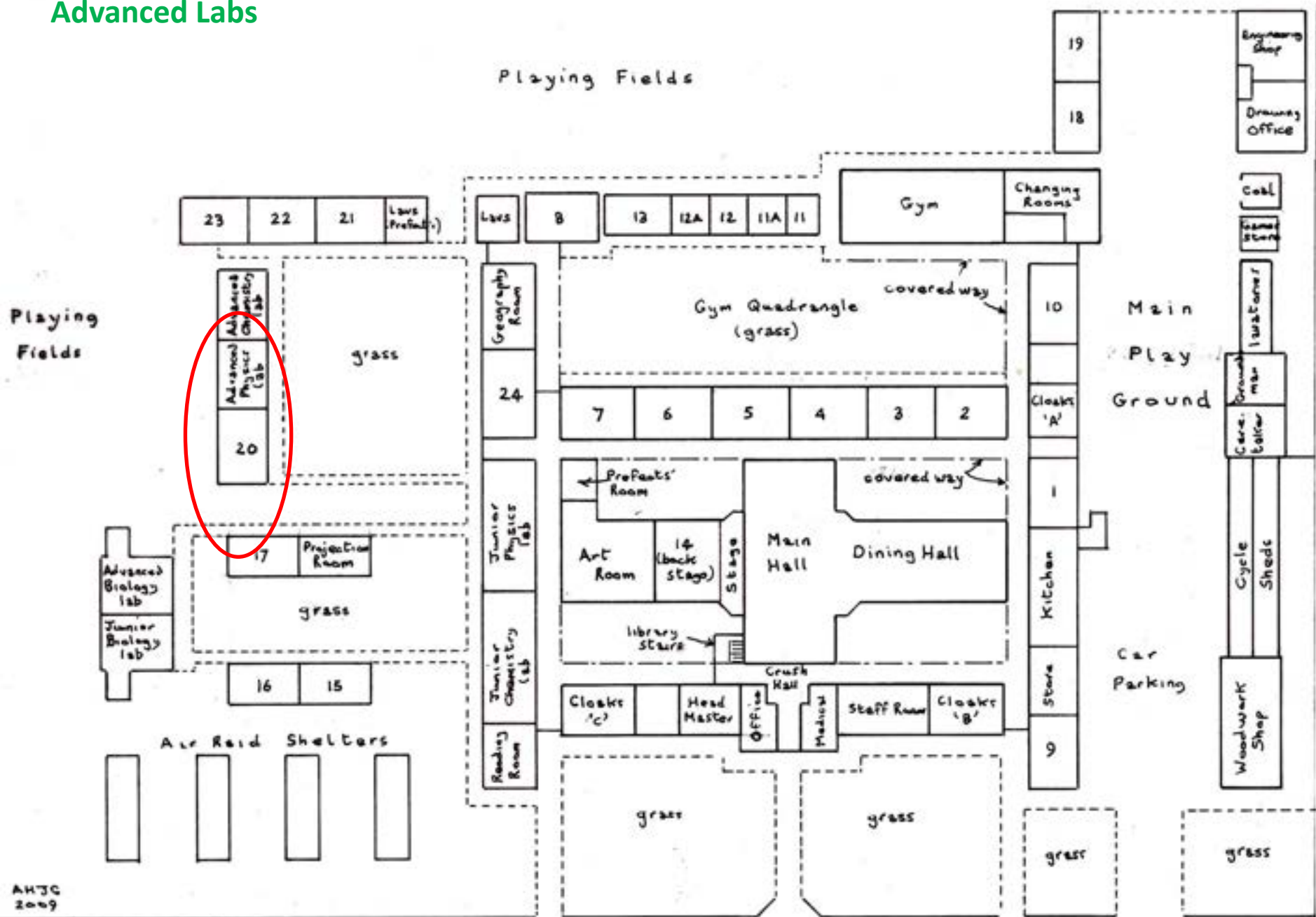
The Games Changing Room seen from the former Main Playground in 2008. By this time a new roadway had been pushed through from Kingsham Road to link with the Lancastrian Site so this area changed from being a playground to a thoroughfare.



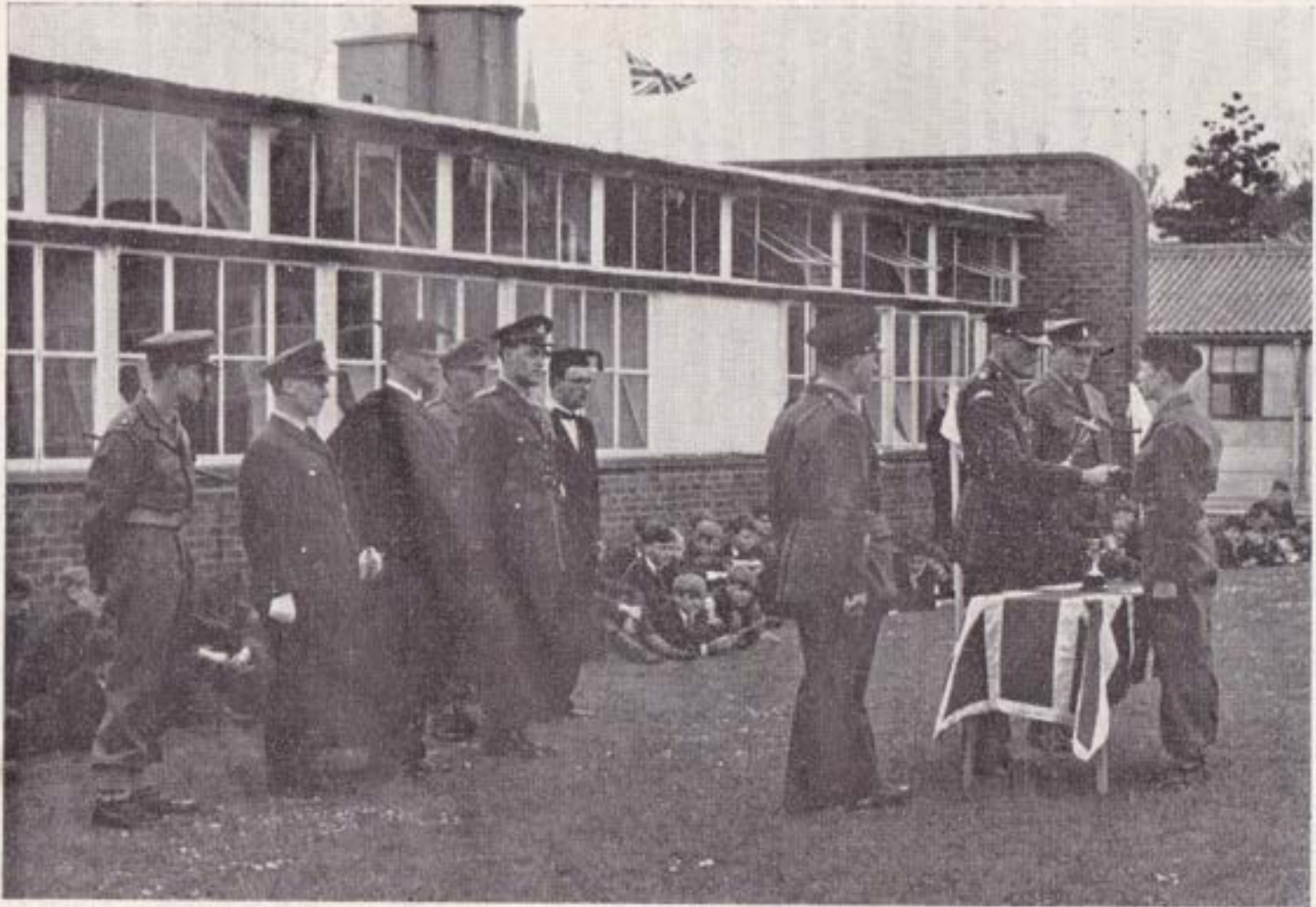
Interior of the Games Changing Room in 2008. The original benches have been replaced and there is now even an air-conditioning unit. Unheard of luxury!



# Advanced Labs

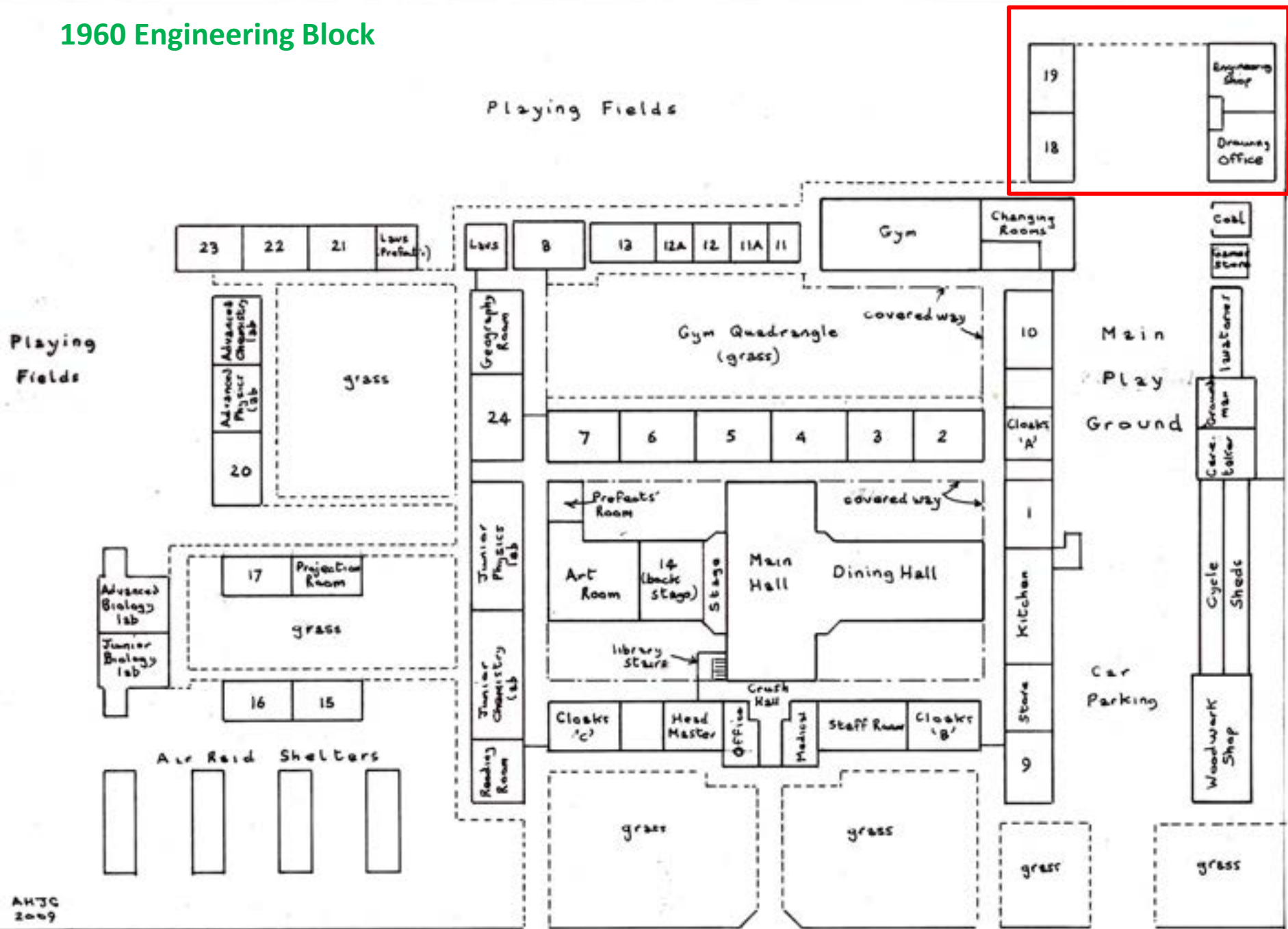


ANNUAL INSPECTION—1964



Matching Rooms 21-23 were the post-war Advanced Chemistry and Physics Labs and Room 20, the latter seen to the right. This photograph, taken from *The Martlet*, shews the annual CCF inspection of 1964. To the right of the distinguished Army Officer who is handing over the cup, is John Hyland, a long serving master who later became joint Deputy Head of the school.

# 1960 Engineering Block





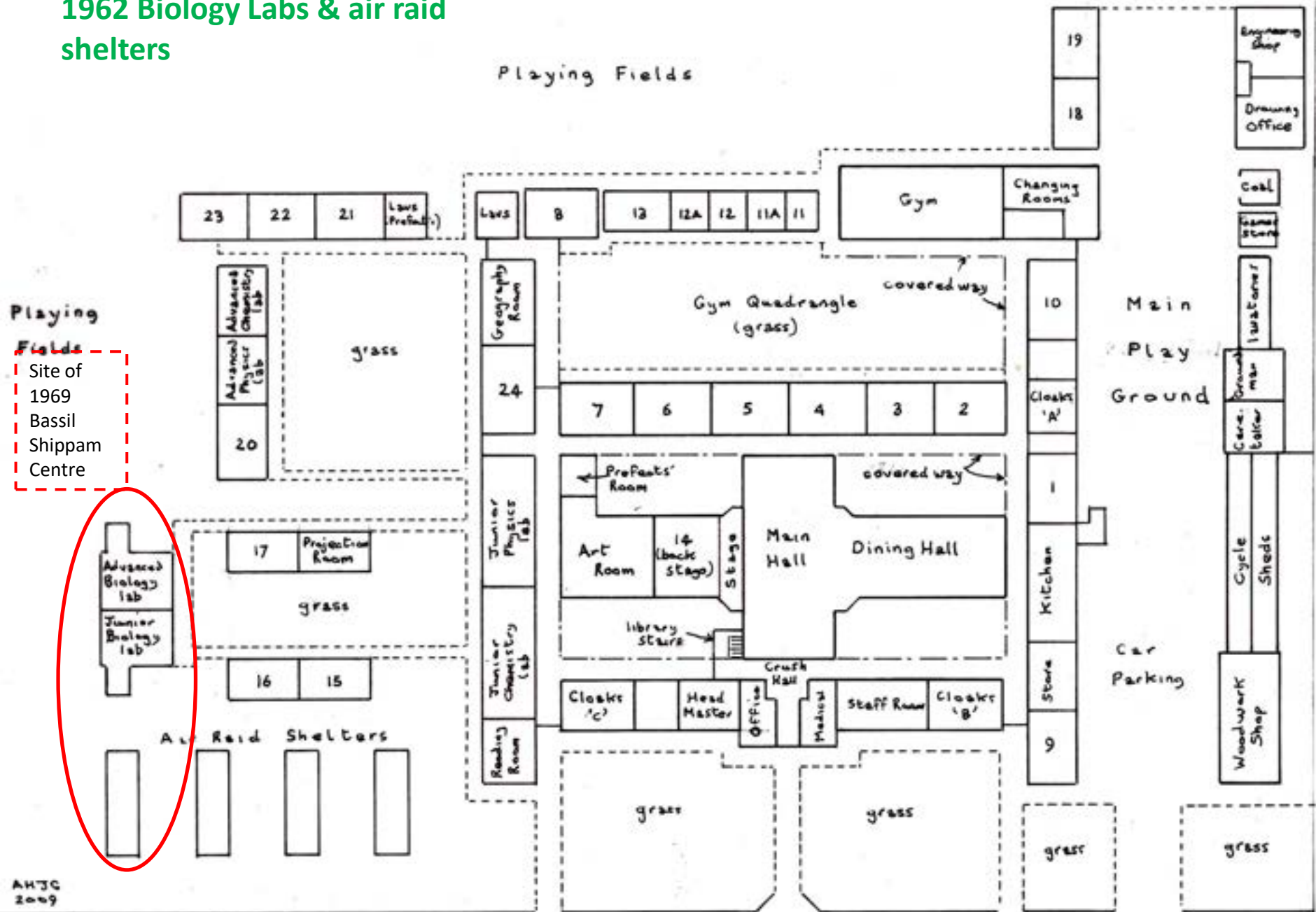


In 1960 the Engineering Block was built in the SW corner of the site, consisting of an Engineering Workshop (left) and a Drawing Office (right), the former becoming the kingdom of Maurice Hall. The huts to the right are Rooms 18 and 19. The noisy hovercraft was not built at CHSB workshops but acquired from a school in Coventry around 1985.



An aerial view of the school from the south in the 1970s, showing the Engineering Block and Rooms 18 and 19 on the left. At that time the Kingsham and Lancastrian sites were only linked by the concrete footpath seen in the left foreground. When the link road was planned around 1985 the Engineering Block was found to be in the way and so had to be demolished, despite being only 25 years old and well equipped.

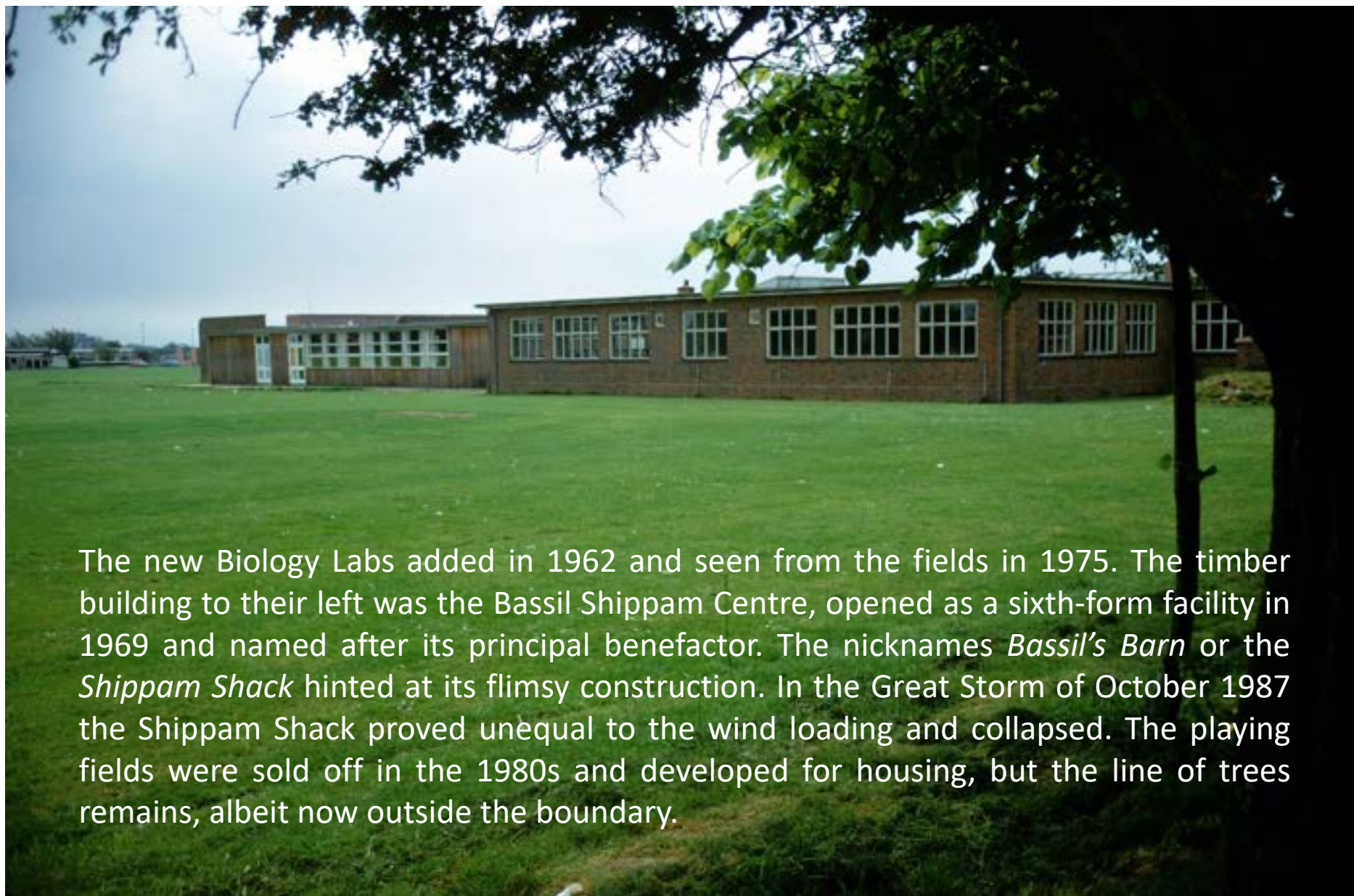
# 1962 Biology Labs & air raid shelters



Playing Fields  
Site of 1969 Basil Shippam Centre

Advanced Biology Lab  
Junior Biology Lab



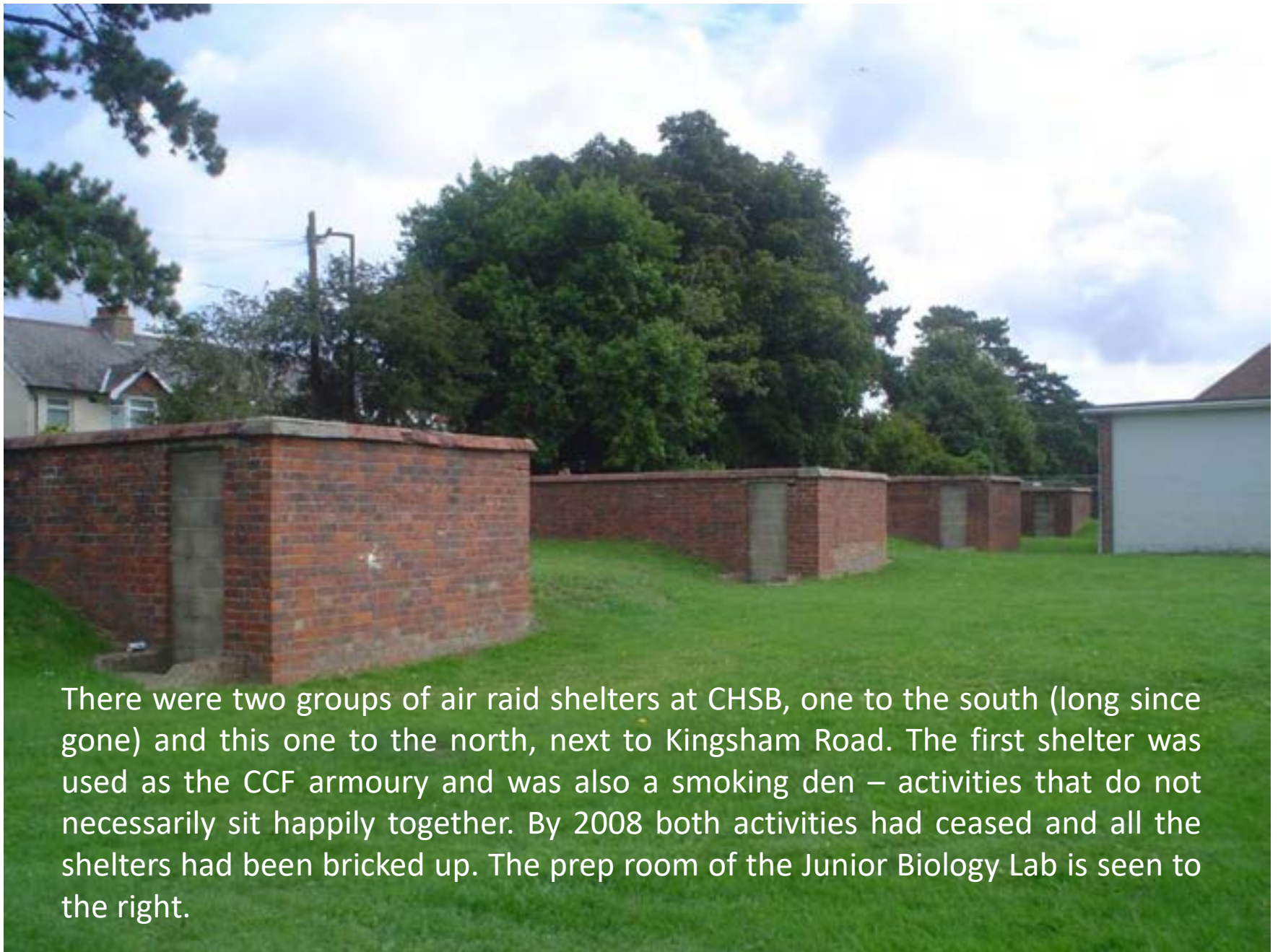


The new Biology Labs added in 1962 and seen from the fields in 1975. The timber building to their left was the Bassil Shippam Centre, opened as a sixth-form facility in 1969 and named after its principal benefactor. The nicknames *Bassil's Barn* or the *Shippam Shack* hinted at its flimsy construction. In the Great Storm of October 1987 the Shippam Shack proved unequal to the wind loading and collapsed. The playing fields were sold off in the 1980s and developed for housing, but the line of trees remains, albeit now outside the boundary.



Back to the new Biology Labs with a view of the Bug Club posing outside their new home with *Bogue* Murch in 1963. The door to the Junior Lab is open affording a glimpse inside, but sadly not a view of its state-of-the-art equipment.





There were two groups of air raid shelters at CHSB, one to the south (long since gone) and this one to the north, next to Kingsham Road. The first shelter was used as the CCF armoury and was also a smoking den – activities that do not necessarily sit happily together. By 2008 both activities had ceased and all the shelters had been bricked up. The prep room of the Junior Biology Lab is seen to the right.



**2014 – and the End is Nigh**



# Some souvenirs



**This commemorative board, presented by the Old Cicestrians, was moved to the new entrance hall at the Lancastrian Wing...**



...as was the War Memorial photographed there in 2011. It is to be hoped that the new Chichester High School might preserve these mementoes and even provide interpretation to put them into the historical context of what has gone before.





The Way we Were...



... but now?



# CHICHESTER HIGH SCHOOL FOR BOYS

b. 13 Sept 1928, d. 22 July 2016

aet. 87yr 10 mths



Demolished 2021  
*Requiescat in Pace*